

# GEPANTS (for acute treatment) Pills that block the CGRP receptor (see PDF on prevention)

## What is CGRP?

- CGRP means Calcitonin Gene Related Peptide.
- CGRP is a protein naturally present in our bodies. It plays different roles, including pain signalling and blood vessel dilatation.
- CGRP plays an important role in migraine, so researchers sought to find ways to block it in order to treat migraine.

## What are Gepants?

- Gepants are a family or class of medications designed to treat migraine.
- They are taken by mouth (pills) and they block the CGRP receptor, not CGRP itself.
- Gepants can be used for the treatment of the migraine attack AND/OR regularly as preventives..

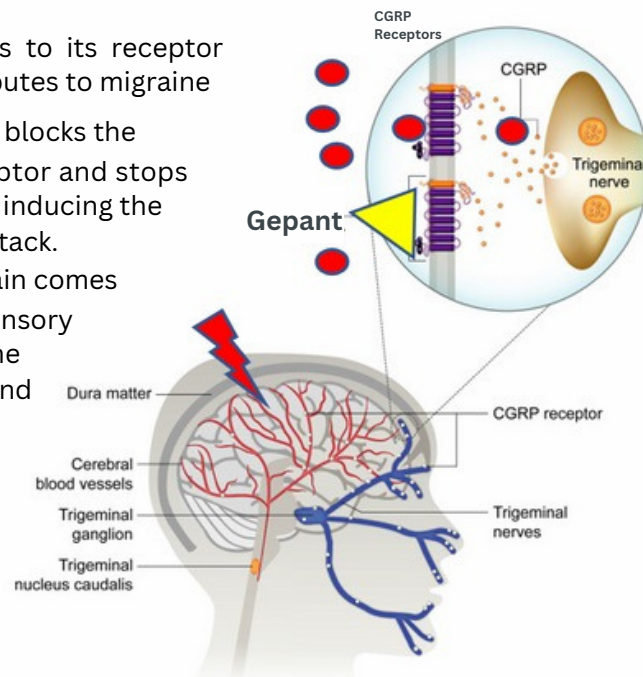
**Gepants are migraine-specific medications based on the scientific understanding of CGRP's role in migraine pathophysiology**

Gepant	Dose and use
Atogepant (qulipta)	<b>Prevention:</b> 10, 30 or 60mg daily. For episodic migraine only.
Rimegepant (Nurtec)	<b>Acute:</b> 75mg as needed
Ubrogepant (Ubrovelvy)	<b>Acute:</b> 50 or 100mg as needed

CGRP binds to its receptor and contributes to migraine

The gepant blocks the CGRP receptor and stops CGRP from inducing the migraine attack.

Migraine pain comes from the sensory nerves in the meninges and arteries



**Gepants taken for the attack are not thought to cause rebound headaches**

Since gepants have been studied for prevention, regular intake should not cause medication-overuse headache.

**Gepants are processed by the liver and may interact with other medications**

Your health care provider will advise you on possible drug interactions. Your pharmacist can also help with this.

# Which gepant is the best?

Gepants have not been compared to one another in clinical studies.

Experience suggests that when a person's migraine is not improved with one gepant, response may improve with another.

**Acute gepants:** ubrogepant and rimegepant

**Prevention gepants:** atogepant and rimegepant.

**\*\* Rimegepant is expected in Canada in 2024.**

**ONE SIZE  
DOES NOT  
FIT ALL**

## What are the chances of controlling a migraine attack with a gepant?

Complete relief 2h after dose: 20%  
Sustained complete relief at 24h: 10-15%  
Partial relief 2h after dose: 40 to 60%  
Sustained partial relief at 24h: 30%

### Treating the attack early is key

Studies show that taking a gepant when migraine symptoms are still mild may **DOUBLE** your chance of success to control the attack.

### How many attacks should I treat to see if a gepant works for me?

Not all attacks are the same. It is also important to treat the attack as soon as it starts. Usually, 3-5 attacks will give you a good idea of your response to an acute treatment. Do not stop treatment without discussing with your healthcare professional.

### If I have tried triptans and they did not work, could gepants still be helpful?

Studies suggest that gepants might work even if triptans didn't. Also, if you had side effects with a triptan, a gepant might be a good option, since they are, in general, better tolerated.

### Are there side effects I should know about?

Common side effects include nausea, constipation and fatigue.

### Can I get a rebound headache (medication overuse headache) with gepants?

Since gepants are effective to prevent migraine when they are taken everyday, the scientific community believes they will not cause medication-overuse headache. This makes gepants a good option for people who treat attacks frequently and may be at risk for overuse.

### Can I use a gepant if I am pregnant or planning a pregnancy?

Gepants should not be used during pregnancy. Use of any medication during pregnancy should be discussed with a health care provider.